



Test Procedure for the NCP3066 3A BUCK Evaluation Board

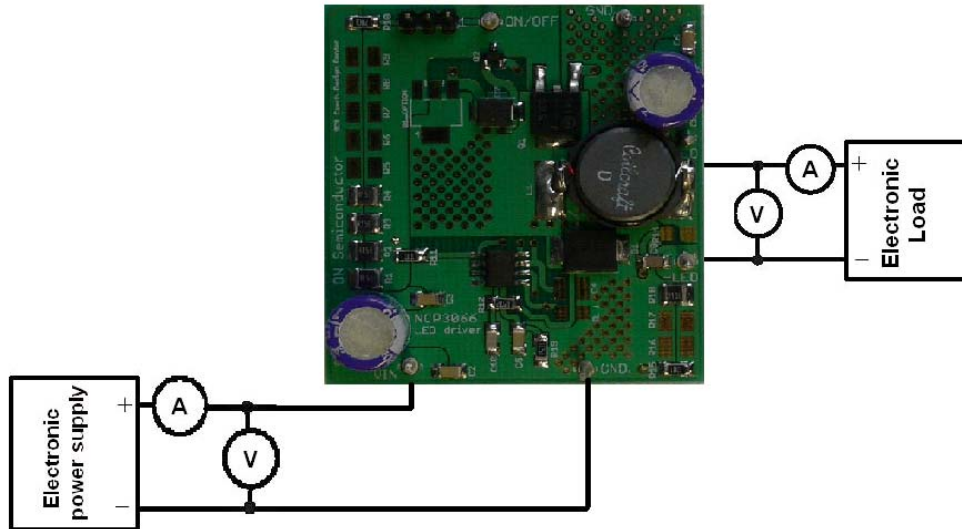


Figure 1: Test Configuration

Voltage Supply (12 V, 3 A)	Voltage Meter	Electronic Load or Current Source
----------------------------	---------------	-----------------------------------

Test Procedure:

1. Connect the test setup as shown in Figure 1.
2. Apply $V_{out} = 3.2$ V in voltage mode at the electronic load (1 HB white LED).
3. Apply the input voltage $V_{cc} = 12$.
4. Check that I_{out} is 1050 mA.
5. Power down V_{cc} .
6. Power down the load.
7. End of test.